



Cape Blanco Lighthouse

Built in 1870, its light shone at a time when maritime travel was the major mode of transportation for our nation's west coast. Today it still shines, continuing the important mission of protecting shipping and saving lives from the Cape's treacherous offshore reef and coastal rocks. The initial construction cost of \$100,000 has been money well spent in insuring safe travel for almost 130 years.

A Special Place

This isolated lighthouse holds at least four Oregon records: it is the oldest continuously operating light, the most westerly in Oregon, the highest above the sea (245 feet), and Oregon's first woman keeper, Mabel E. Bretherton, signed on in 1903.

Cape Blanco also has the distinction of being the only lighthouse in Oregon with an operational Fresnel lens that allows visitors into the lens room.



Nature
HISTORY
Discovery

Cape Blanco Lighthouse

Come Feel the View!

Tours allow an unparalleled view of the surrounding cape and coast line from the lens room atop this magnificent historic structure.

TOURS:

April - October

Thursday - Monday

10:00 am - 3:30 pm

Gates close at 3:30 pm

For more information on tours, historic sites, and campgrounds, please contact:

Cape Blanco Management Unit Office

PO Box 1345

Port Orford, OR 97465

(541) 332-6774

www.oregonstateparks.org



These tours are made possible with the cooperation of the Bureau of Land Management.

Lighthouse Partners

A cooperative agreement between state and federal agencies allows us to keep Cape Blanco Lighthouse open to the public. Partners include:

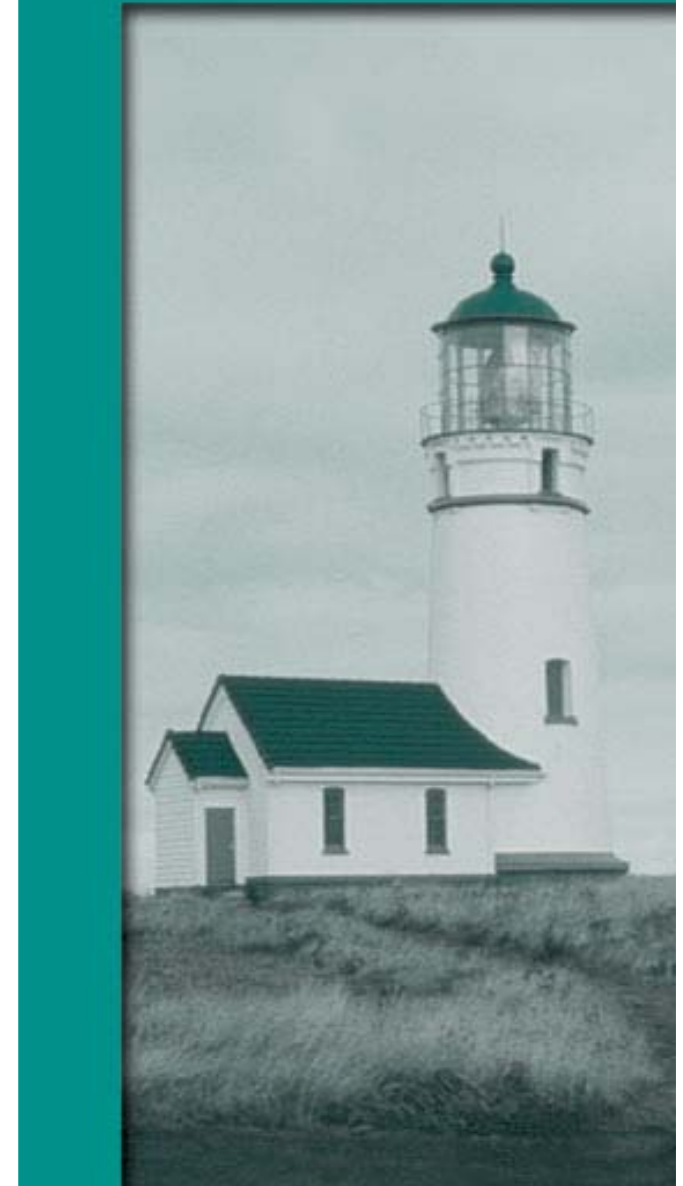
Bureau of Land Management

Oregon Parks and Recreation Department

Oregon State Historic Preservation Office

Confederated Tribes of Siletz Indians of Oregon

Coquille Indian Tribe



Lighthouse Keepers

James Langlois and James Hughes were Cape Blanco's most distinguished keepers. Their job was to clean the lamps, polish the huge Fresnel lens, and keep the light working from sunset to sunrise. Both served their entire careers at Cape Blanco; Langlois for 42 years and Hughes for at least 33 years. Hughes was the second son of Patrick and Jane Hughes, whose 2,000 acre ranch bordered the Lighthouse property and is now Cape Blanco State Park.

Dangerous Waters

The SS Cottoneva wrecked in Port Orford February 10, 1937. The ship's propeller is displayed at the Wayfinding Station in Port Orford.



Special Treasures

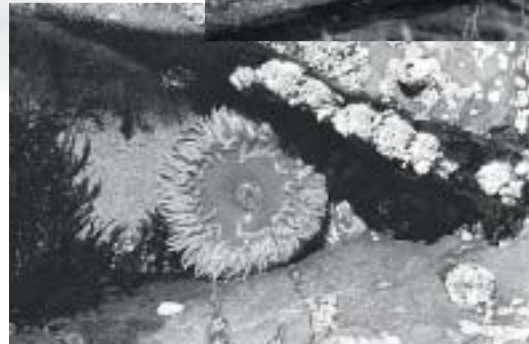
Historic Hughes House.

Tour this 100 year old example of Eastlake Victorian architecture. Volunteers offer tours April through October, 10:00 am to 3:30 pm, Thursday through Monday.



Abundant wildlife.

Deer, fox, elk, falcons, ducks and songbirds call the Cape their home.



An ocean full of discoveries.

Beaches on both sides of the cape offer a multitude of ocean life and hidden coves in which to picnic or dream of pirates.



Sites to Visit

Port Orford Heads Lifesaving Station is listed on the National Register of Historic Places. Built in 1934, this site has the finest remaining example of Coast Guard architecture of the period. This site is also great for picnicking and viewing wildlife. Its trail system reveals awesome ocean vistas. Signs on US 101 in the center of Port Orford direct you to turn west on 9th street and follow the road up to the station.

Coquille River Lighthouse, Bullards Beach State Park, Bandon, approximately 25 miles north of Cape Blanco. Volunteers offer tours during summer. Call (541) 347-2209 for more information.